

Standard operating procedures EPT Trays

All EPT trays are part of the EPT pooling system and can be exchanged 1:1 full for empty along the supply chain, reducing the overall quantities required.

EPT trays are made of durable PP plastic and, if handled correctly, can circulate at least 100 times within the European supply chain from production to wholesalers and auctions to retail. A recycled content of at least 35% is used right from the first production run.

EPT trays are manufactured in RAL 6005.

All EPT trays are characterised by rounded corners and edges for safe manual handling, drainage holes on the top for better drying after cleaning and a water reserve of up to 10 mm. The closed base also significantly reduces soiling of the working environment.

In addition to product barcode, EPT trays are also equipped with a serialised 2D data matrix (QR) and corresponding RFID tag, thus offering all the technical options for easy inventory management.

At the end of their service life, EPT trays must be returned to an EPT depot, where they are reground and reused as raw material for the next generation of EPT trays (cradle-to-cradle use).

The EPT 400 series is designed for 5 trays on one CC layer or 3 per EC layer.

The EPT 200 series is designed for 6 trays on a CC layer or 4 per EC layer.

The B2B deposit value of all EPT trays is fixed at € 3 per tray, regardless of the model.

Design ETP Label:

45 x 16 mm

Productname (Fustcode) as number with differing colour

Barcode

Serialized 2D Data Matrix Code and UHF RFID

EPT 400 (5/CC Layer)



8 – 10 x 10,5-13 cm
GTIN 4262480837750
GRAI 800304262480837750XXXXXXXXXX



EPT 200 (6/CC Layer)



8 – 12 x 9-10,5 cm
GTIN 4262480837699
GRAI 800304262480837699XXXXXXXXXX



10 x 12 cm
GTIN 4262480837774
GRAI 800304262480837774XXXXXXXXXX



6 – 8 x 10,5-13 cm
GTIN 4262480837682
GRAI 800304262480837682XXXXXXXXXX



EPT 400 777 (12 cm)

The EPT 777 is particularly suitable for the safe transport and presentation at the POS of top-heavy plants, which are mainly found in the houseplant range, e.g. orchids and bromeliads.

Of course, this tray can also be used for all other assortments produced in 12 cm pots.

Dimensions:

| | |
|-----------------|---------|
| Length | 562 mm |
| Width | 253 mm |
| Height | 59.5 mm |
| Stacking height | 20 mm |
| Weight | 465 gr |



Special features:

- ✓ Transports 10 x 12cm pots
- ✓ Water reserve to 10 mm
- ✓ One handle on each short side
- ✓ Equipped with EPT labels on the short sides labels and a dimpled labelling field for your own adhesive labels



10 x 12 cm
 GTIN 4262480837774
 GRAI 800304262480837774XXXXXXXXXX

EPT 400 775 (10,5 – 13 cm)

As a universal tray, the EPT 775 transports and presents 8 to 10 plants in pots measuring 10.5-13 cm. The concept allows its use with a wide variety of assortments and thus further increases efficient utilisation in the supply chain.

Dimensions:

| | |
|-----------------|--------|
| Length | 562 mm |
| Width | 253 mm |
| Height | 75 mm |
| Stacking height | 20 mm |
| Weight | 540 gr |



Special features:

- ✓ Suitable for 8 to 10 pots from 10.5 to 13 cm
- ✓ Water reserve to 10 mm
- ✓ One handle on each short side
- ✓ Equipped with EPT labels on the short sides labels and a dimpled labelling field for your own adhesive labels



8 – 10 x 10,5-13 cm
 GTIN 4262480837750
 GRAI 800304262480837750XXXXXXXXXX

EPT 769 (9-10,5 cm)

EPT 769 carries 12 pots of 9 - 9.5 cm and up to 8 pots of 10.5/vol. 11 cm.
As a multi-tray, EPT 769 can be used all year round and across different assortments,
which results in a faster turnaround and more efficient utilisation.

Dimensions:

| | |
|-----------------|--------|
| Length | 386 mm |
| Width | 279 mm |
| Height | 60 mm |
| Stacking height | 20 mm |
| Weight | 414 gr |



Special features:

- ✓ Suitable for 8 to 12 pots from 9 to 10.5 cm
- ✓ Handles on all sides
- ✓ EPT label and dimpled field for your own adhesive labels on the long sides



8 – 12 x 9-10,5 cm
GTIN 4262480837699
GRAI 800304262480837699XXXXXXXX

EPT 200 10,5-13 cm (Fustcode 768)

EPT 768 offers safe transport of 8 pots between 10.5 and 12 cm as well as 6 pots of 13 cm.
As a multi-purpose tray, it reduces sorting and storage effort at all locations and enables quick
and efficient rotation for year-round use.

Dimensions:

| | |
|-----------------|--------|
| Length | 386 mm |
| Width | 279 mm |
| Height | 70 mm |
| Stacking height | 20 mm |
| Weight | 434 gr |



Special features:

- ✓ Suitable for 6 to 8 pots from 10.5 cm to 13 cm
- ✓ Handles on all sides
- ✓ EPT label and dimpled field for your own adhesive labels on the long sides



6 – 8 x 10,5-13 cm
GTIN 4262480837682
GRAI 800304262480837682XXXXXXXX

Logistics with EPT Trays

Please note that a valid EPT customer number must be provided in the EPT depots so that a transaction can be carried out.

To ensure a smooth process within the entire supply chain, functional and defective material must always be separated.

Defective items should be returned to Euro Plant Tray as soon as possible for a one-for-one exchange to ensure your usable EPT stock remains at the contracted volume. There is no limit to the quantities that can be exchanged.

Different sizes of EPT trays should never be mixed on a load carrier without being clearly separated and labelled accordingly. This can be done, for example, by different layers on a CC or EC trolley or by clearly labelled stacks of trays on a Euro pallet.

Own labels and price labelling should be avoided as far as possible, but must not be stuck on the EPT labels under any circumstances. If your own labels are used, care must be taken to ensure that the adhesive can be easily removed without leaving any residue.

Stickers and labels must be removed as far as possible before delivery to an EPT depot.



EPT 400 on CC Containers without shelves
At least the top should be secured once with foil



EPT 400 on CC Containers with shelves
Additional securing of the load is not necessary

| | Euro Pallet | CCs no shelves | CCs with shelves | EC no shelves | EC with shelves | Auction trolley |
|--|-------------|----------------|------------------|---------------|-----------------|-----------------|
| EPT 777 Trays per stack | 111 | 85 | 15 | 40 | 15 | 75 |
| Stacks | 6 | 5 | 4 x 5 | 3 | 2 x 3 | 8 |
| EPT 777 per loadcarrier | 666 | 425 | 300 | 120 | 90 | 600 |
| | | | | | | |
| EPT 775 Trays per stack | 117 | 120 | 20 | 75 | 20 | 100 |
| Stacks | 6 | 5 | 4 x 5 | 3 | 2 x 3 | 8 |
| EPT 775 per loadcarrier | 702 | 600 | 400 | 225 | 120 | 800 |
| | | | | | | |
| EPT 768 & 769 Trays per stack | 105 | 85 | 15 | 40 | 15 | 75 |
| Stacks | 8 | 6 | 4 x 6 | 4 | 2 x 4 | 10 |
| EPT 768 & 769 per loadcarrier | 840 | 510 | 360 | 160 | 120 | 750 |

Broken Material

An EPT tray is classified as broken and thus for a one-to-one replacement in an EPT depot if

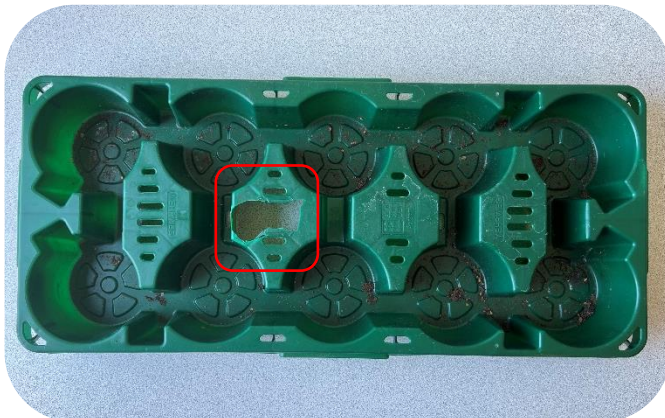
- The tray itself is broken into at least 2 parts, whereby the returned parts must represent significantly more than half of the tray
- There are cracks and breaks in the edges that could lead to injuries
- There is damage to the pot-bearing parts that jeopardise safe transport and water retention
- The RFID tags or QR/EAN are so damaged that they can no longer be scanned



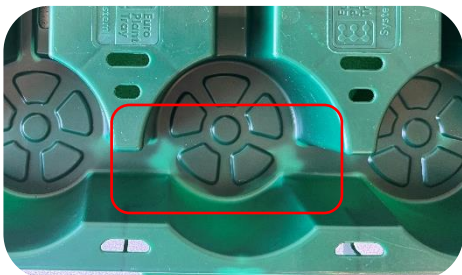
Breakage of the rim qualifies for an exchange

Not considered broken:

- Breaks in the surfaces
- White breakage
- Soiling



Surface breaks and soiling do not qualify for a 1 to 1 exchange



White breakage does not qualify for an exchange